



**Organização  
Pan-Americana  
da Saúde**



Escritório Regional da  
Organização Mundial da Saúde



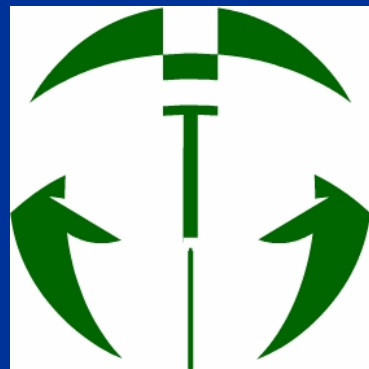
Universidade Federal  
Rural do  
Rio de Janeiro



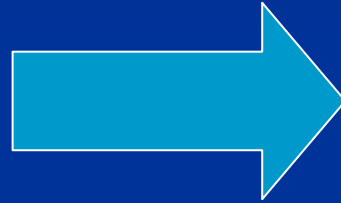
# Bioecologia de Morcegos

[cbgitti@ufrrj.br](mailto:cbgitti@ufrrj.br)

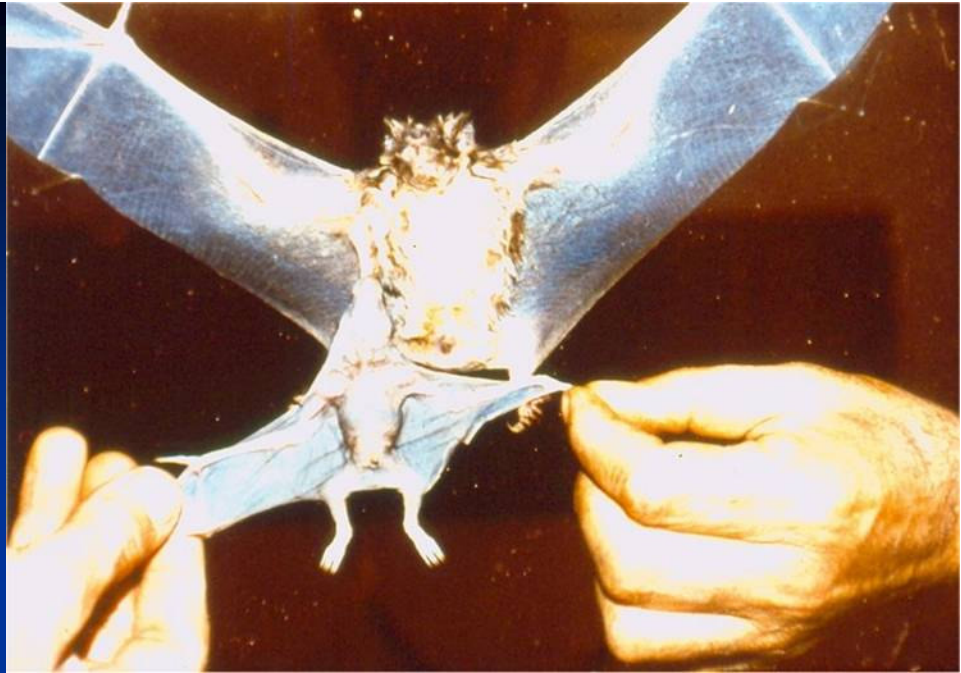
[cbgitti@yahoo.com.br](mailto:cbgitti@yahoo.com.br)



**PNCRH**  
PROGRAMA NACIONAL DE CONTROLE DA  
RAIVA DOS HERBÍVOROS







bat conservation international  
[www.batcon.org](http://www.batcon.org)

common  
latin  
Gambian epauletted fruit bat  
*Epomophorus gambianus*



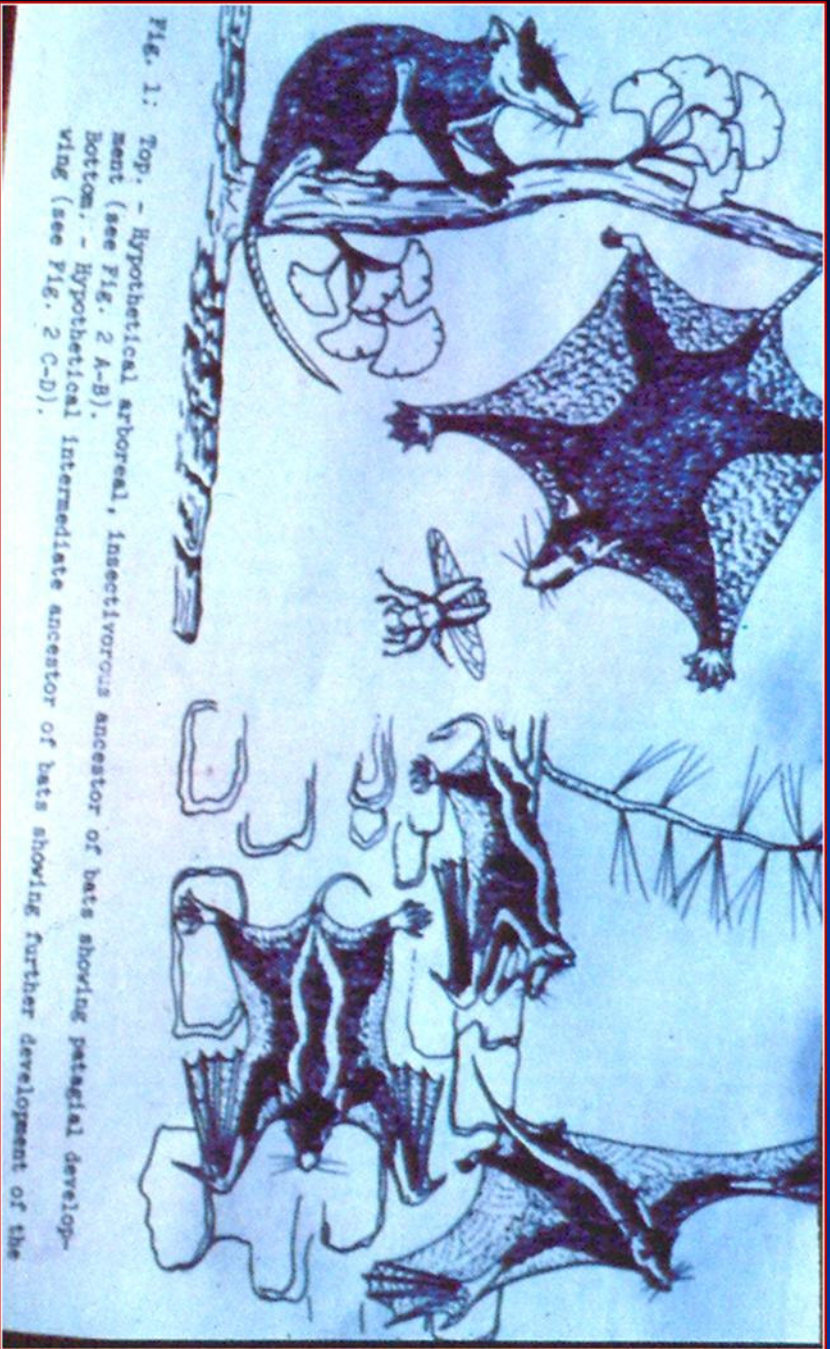


Fig. 1: Top: - Hypothetical arboreal, insectivorous ancestor of bats showing patagial development (see Fig. 2 A-B).  
Bottom: - Hypothetical intermediate ancestor of bats showing further development of the wing (see Fig. 2 C-D).

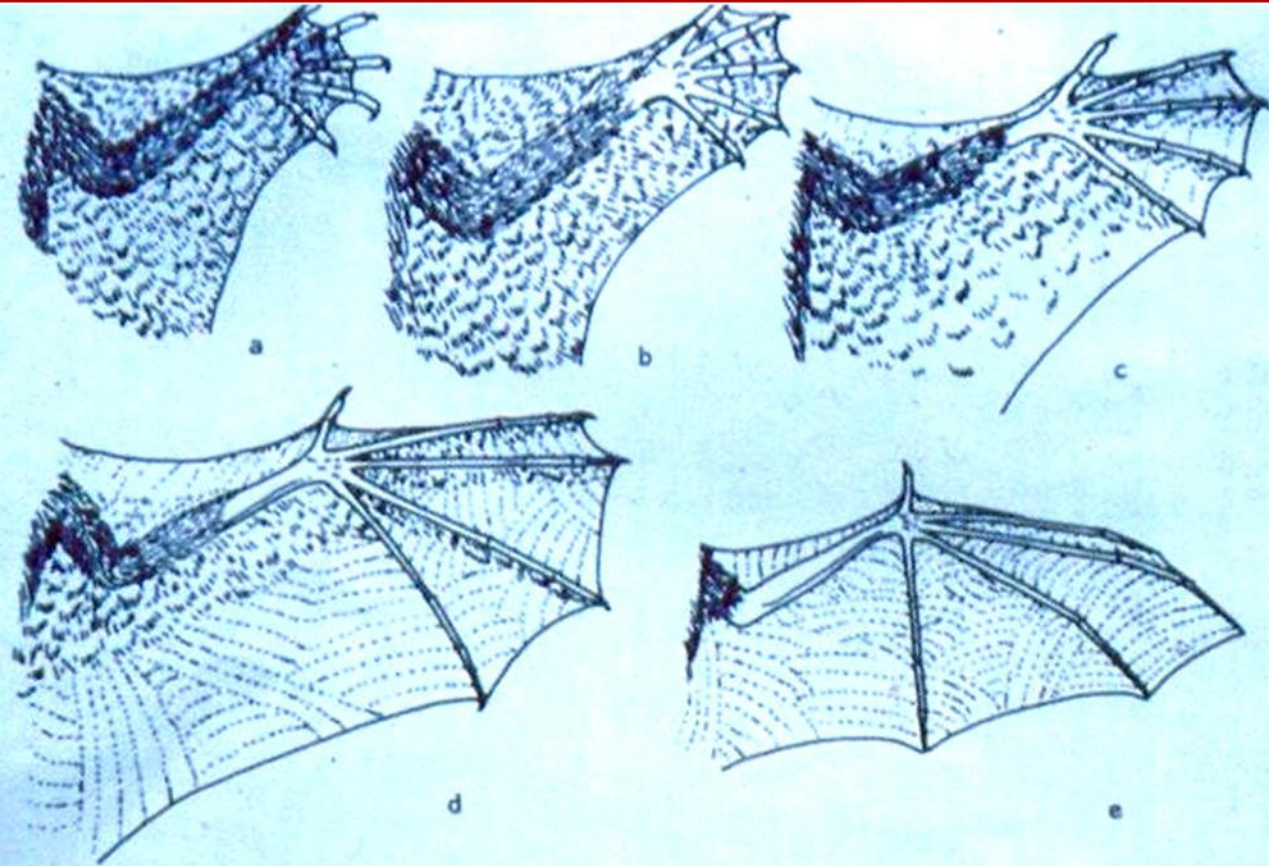


Fig. 2. Hypothetical, progressive stages in the development of the wing of bats. A-C, early stages in which emphasis was on gliding. D, an intermediate stage in wing development. E, a fully developed bat wing.

# Classificação

- Classe Mammalia,
- Ordem Chiroptera,



- Subordens

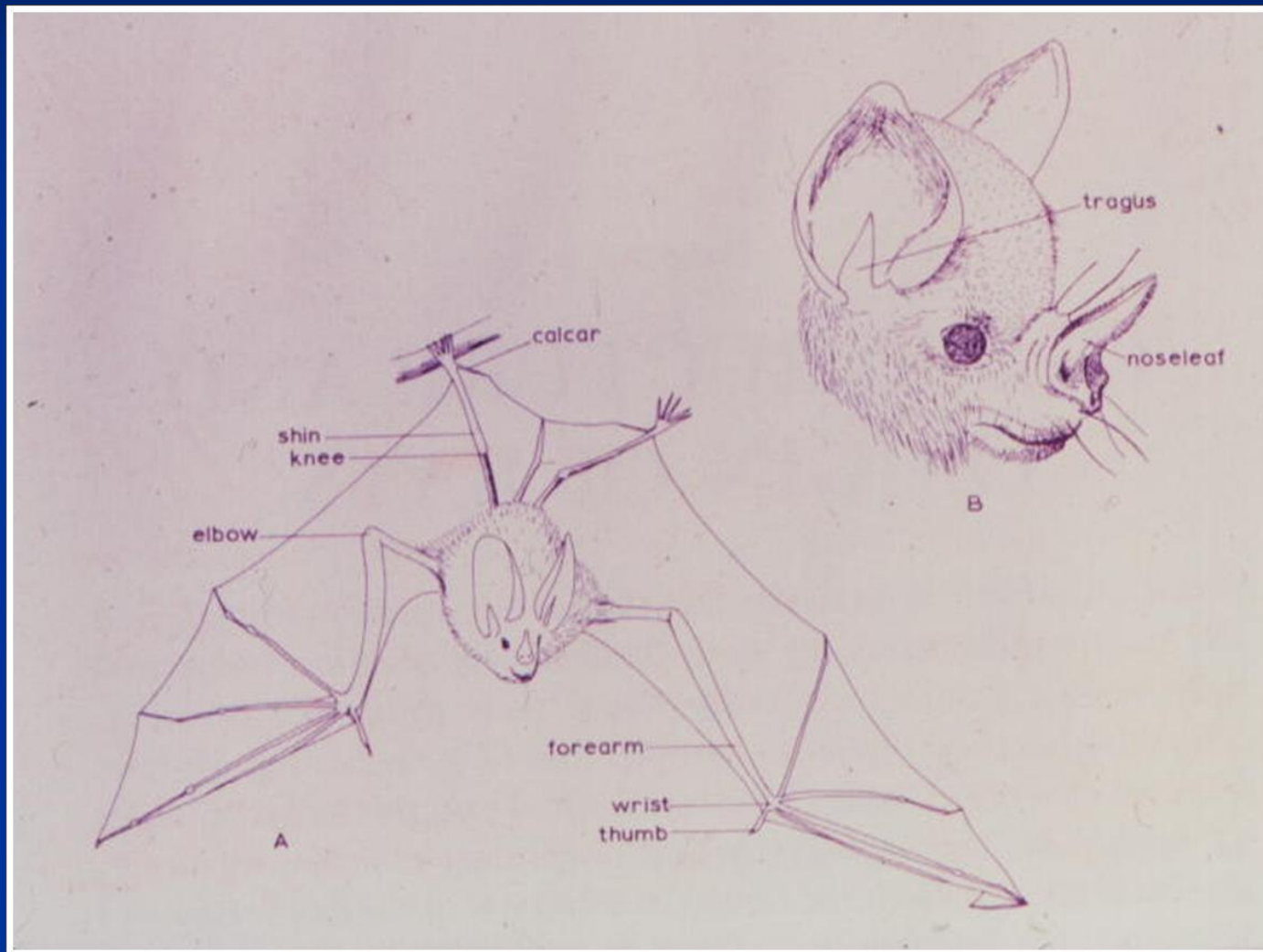
Microchiroptera

Megachiroptera

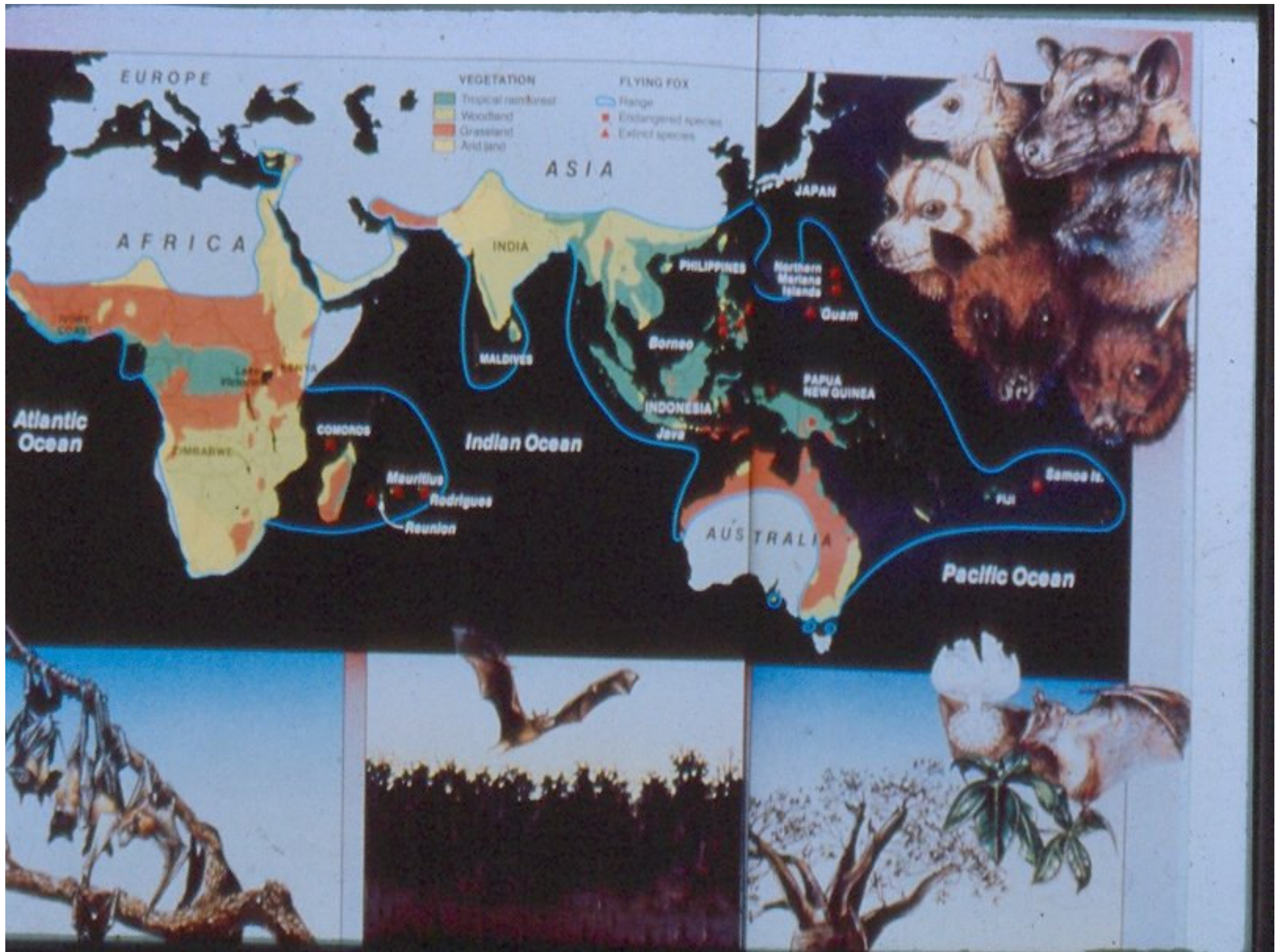




## ■ Ordem Chiroptera



# Megachiroptera



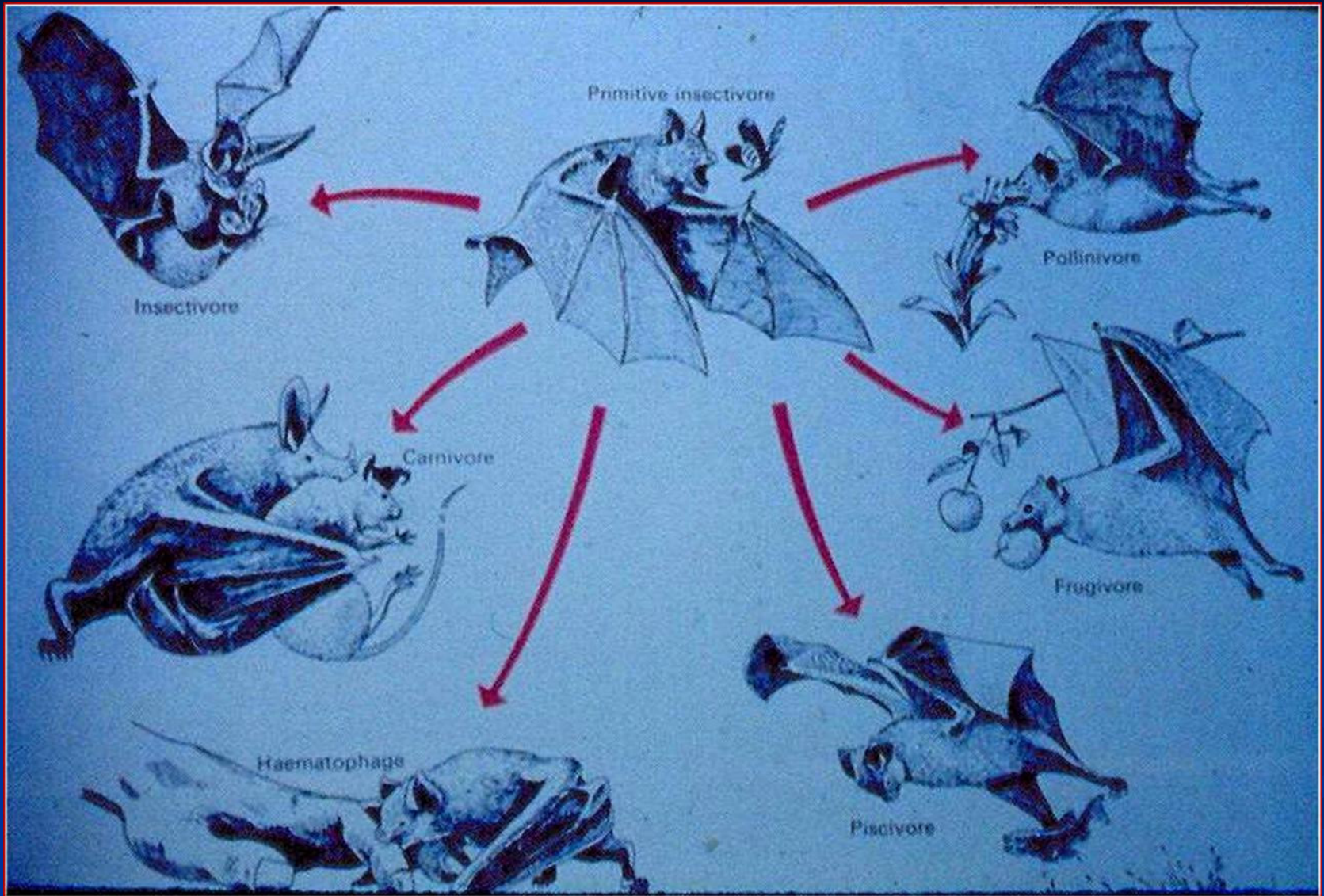


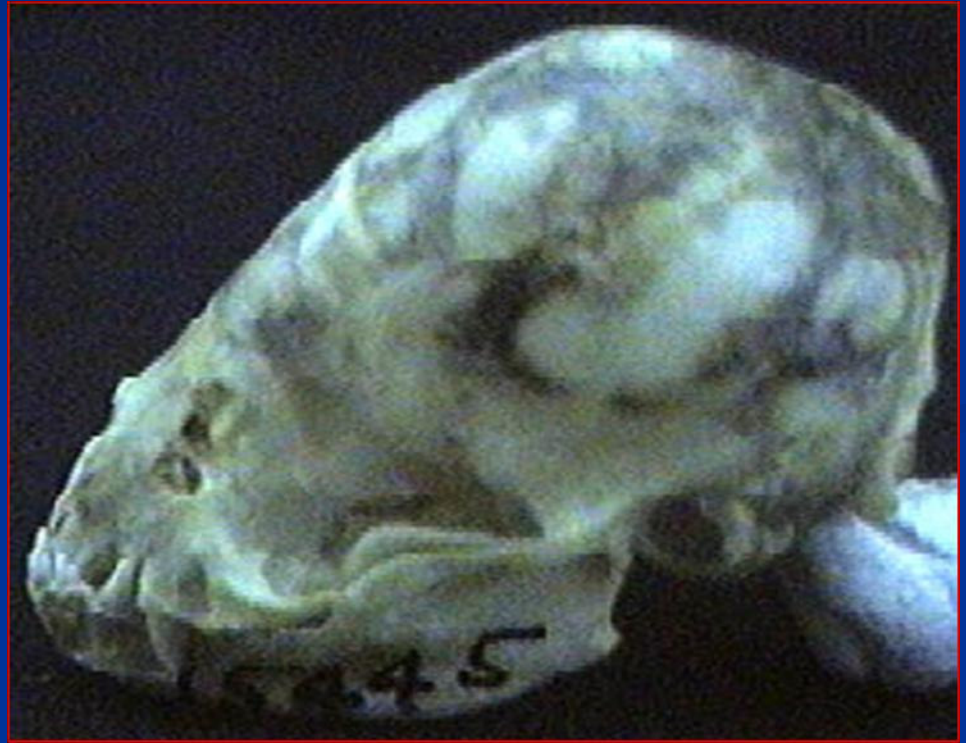
# Microchiroptera



# HÁBITOS ALIMENTARES







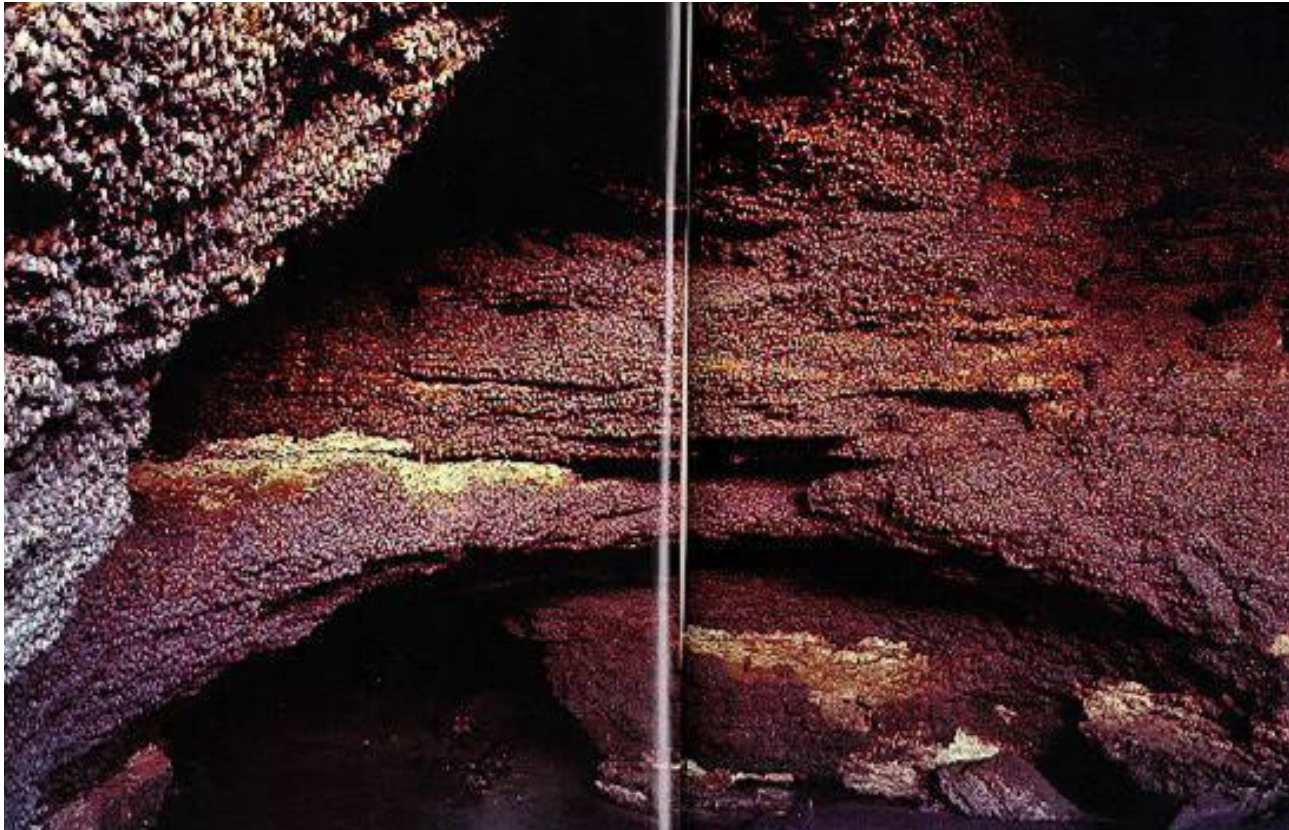


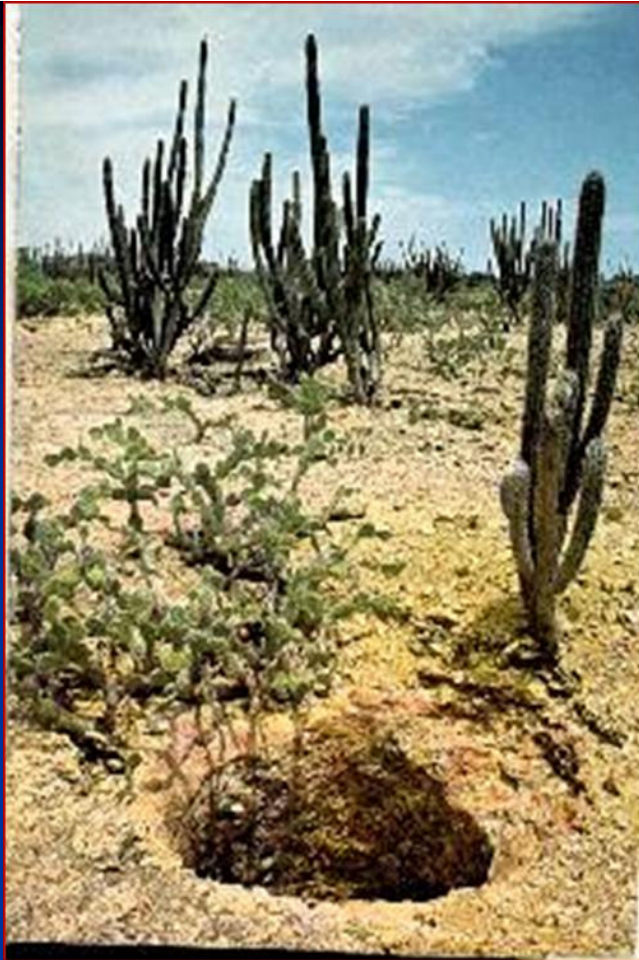
# Insetívoros











bat conservation international  
[www.batcon.org](http://www.batcon.org)



common  
latin Pallid bat  
*Antrozous pallidus*



common  
latin  
Greater bonneted bat  
*Eumops perotis*



bat conservation international  
[www.batcon.org](http://www.batcon.org)



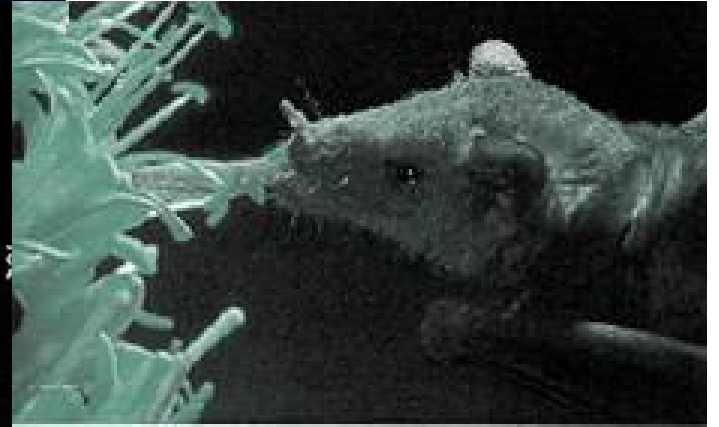


# Polinívoro / Nectarívoro

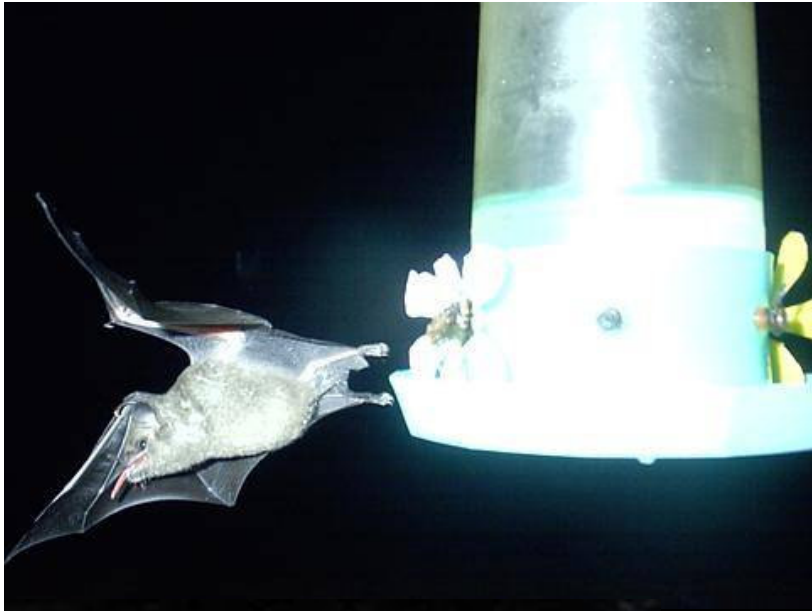


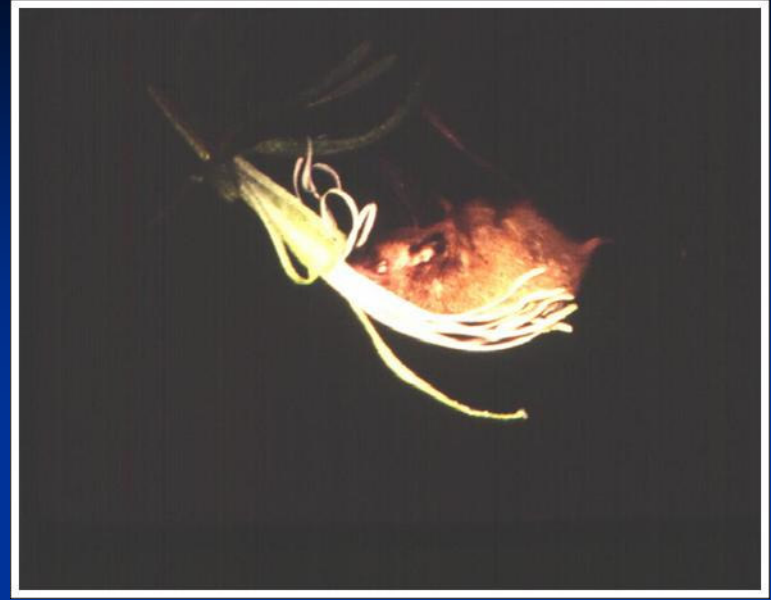


ISRAELI BIRD IN LIGHT









common  
latin

Gambian epauletted fruit bat

*Epomophorus gambianus*



batcon.org  
bat conservation international, inc.

Frugívoros

batcon.org  
bat conservation international, inc.



Common  
Latin  
Jamaican fruit-eating bat  
*Artibeus jamaicensis*



Artibeus jamaicensis

welcome to  
BAT CONSERVATION INTERNATIONAL

bat conservation international  
[www.batcon.org](http://www.batcon.org)

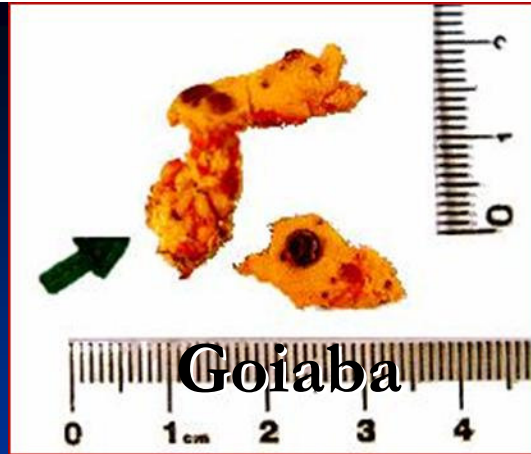
click for information on this bat







Maracujá



Goiaba



Jabuticaba



Manga



Ameixa



Carambola



Amêndoa

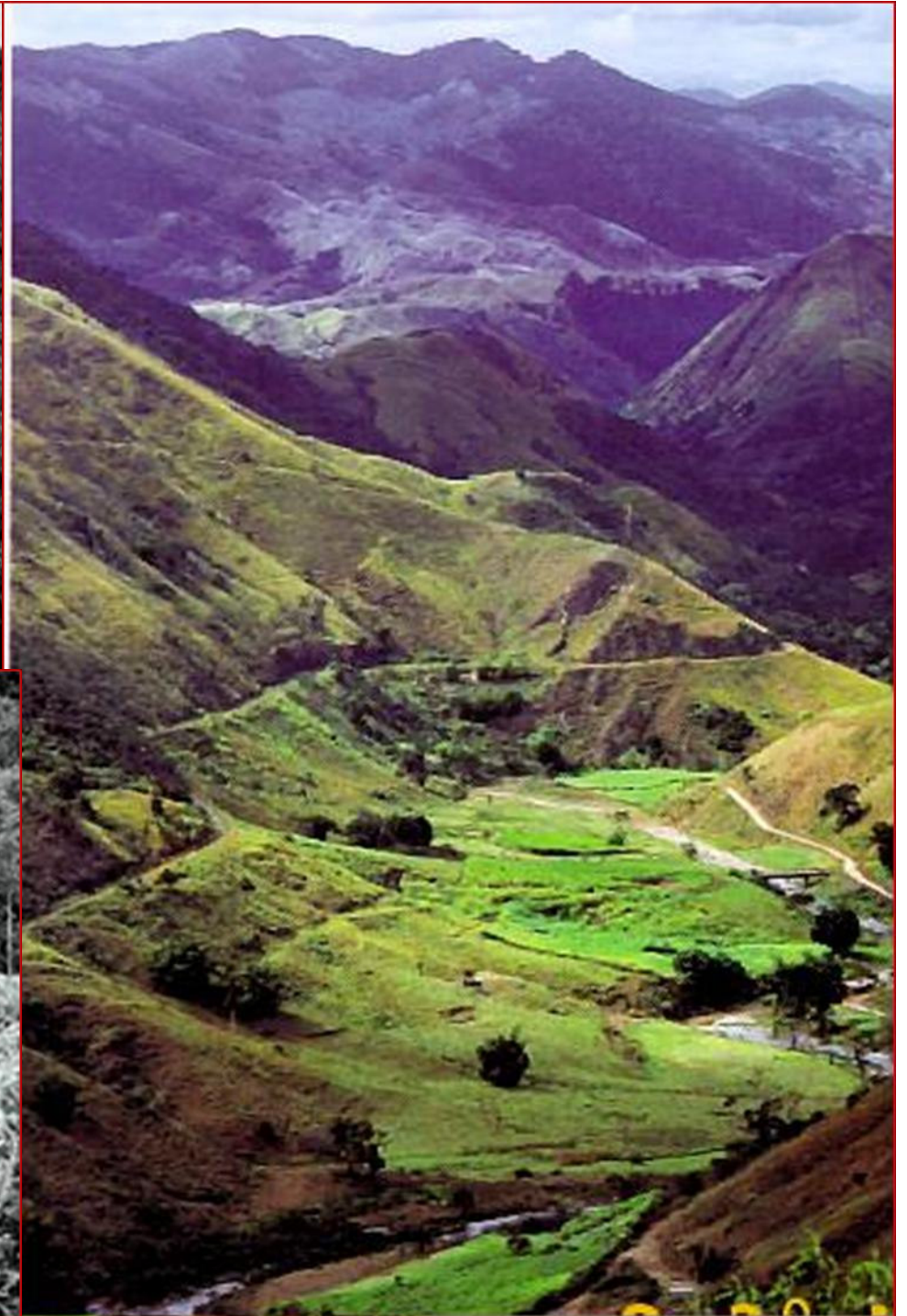


Alecrim









# Carnívoros



common  
latin  
Fisherm  
Noctilio

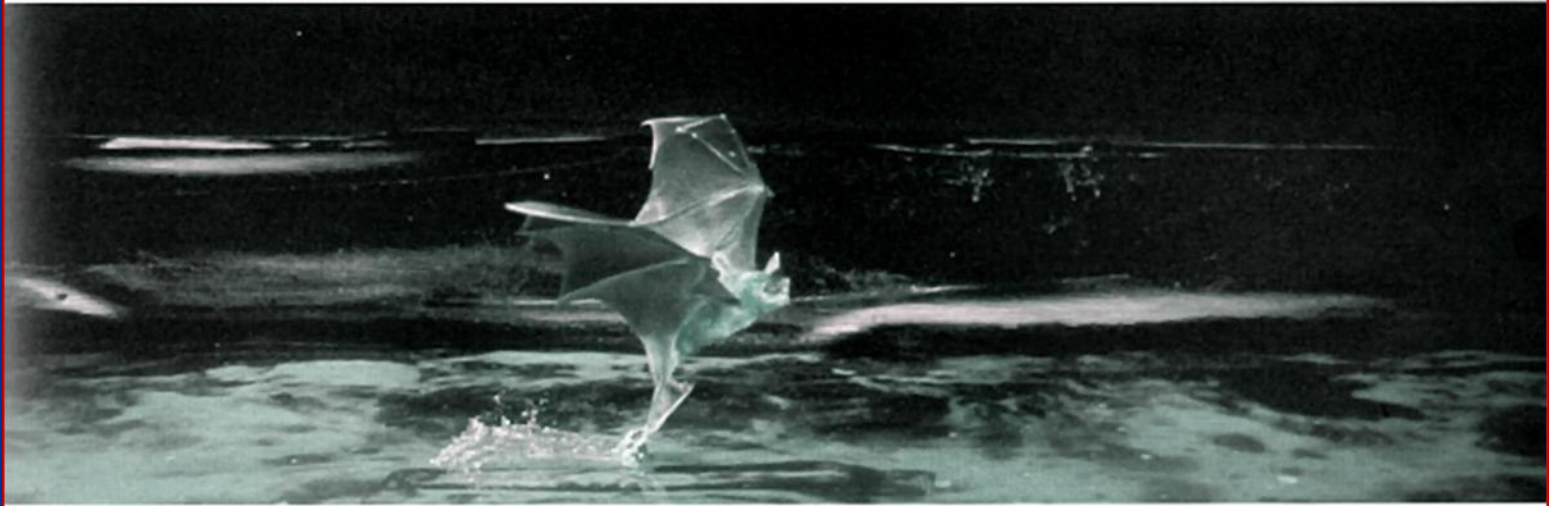
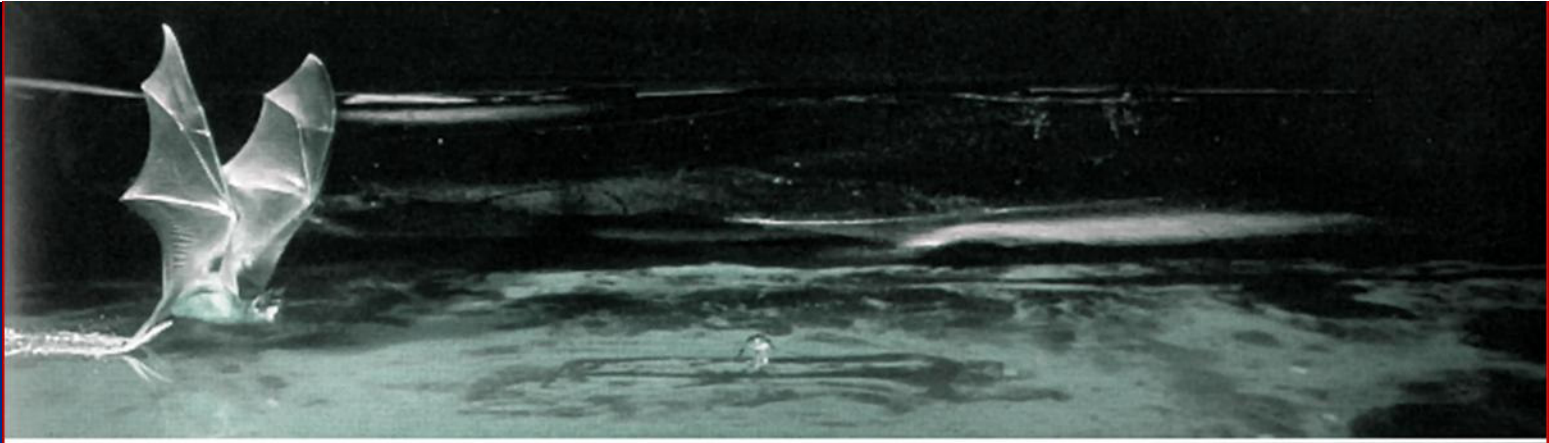
bat conservation international  
[www.batcon.org](http://www.batcon.org)

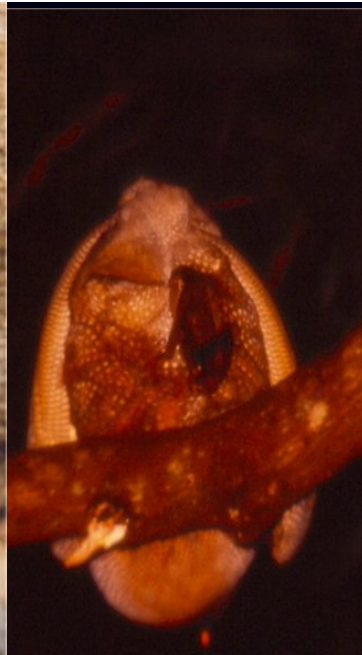
Ictiófagos





Marco Aurelio Ribeiro de Mello





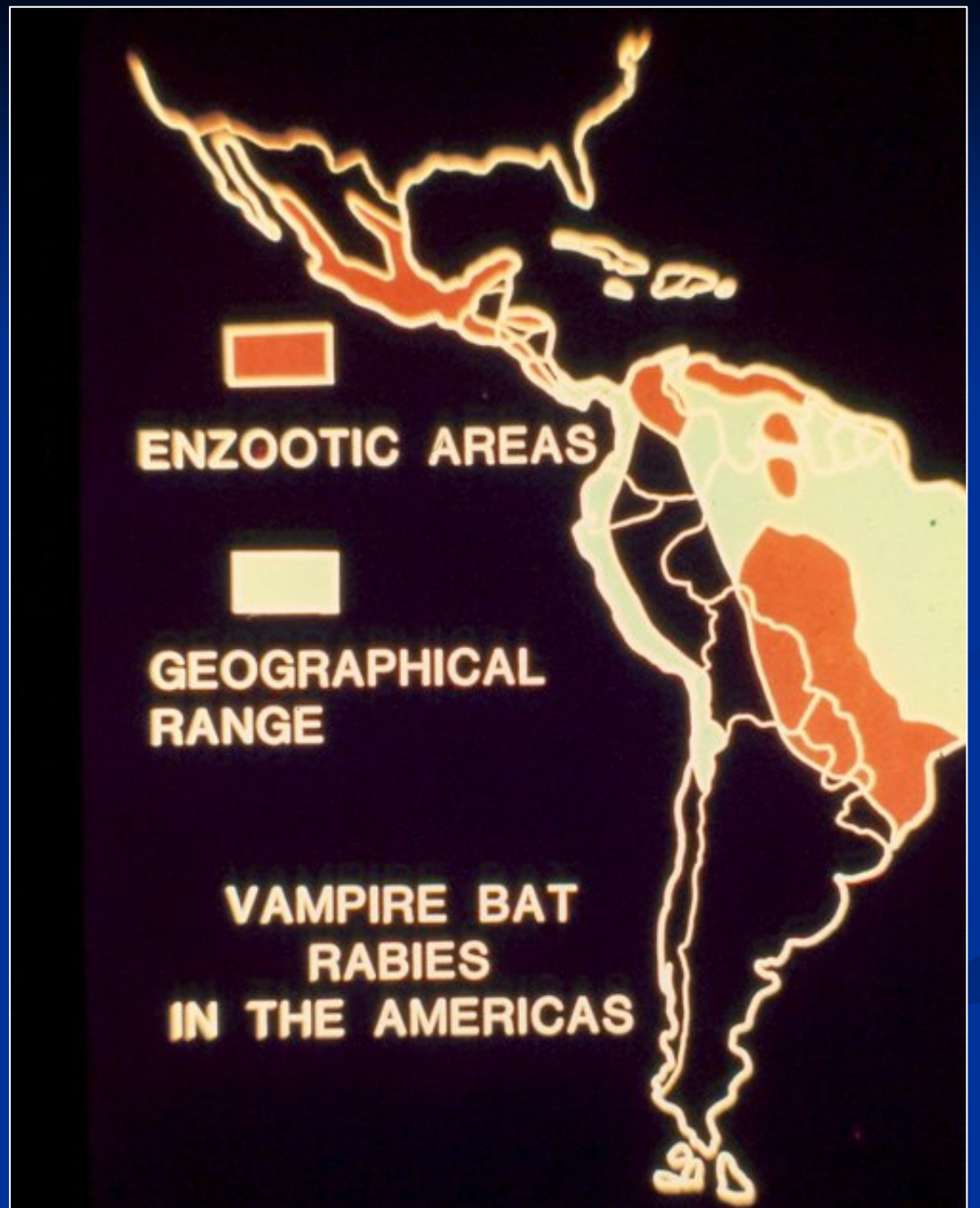
**Hematófagos**



# Classificação

- Classe Mammalia,
- Ordem Chiroptera,
- Subordem Microchiroptera,
- Família Phyllostomidae
- Subfamília Desmodontinae.
  - *Desmodus rotundus* (Geoffroy, 1810)
  - *Diphylla ecaudata* (Spix, 1823)
  - *Diaemus youngii* (Jentink, 1893).

# MORCEGOS HEMATÓFAGOS













*Diphhylla ecaudata*

*Diphylla ecaudata*









*Diaemus youngii*

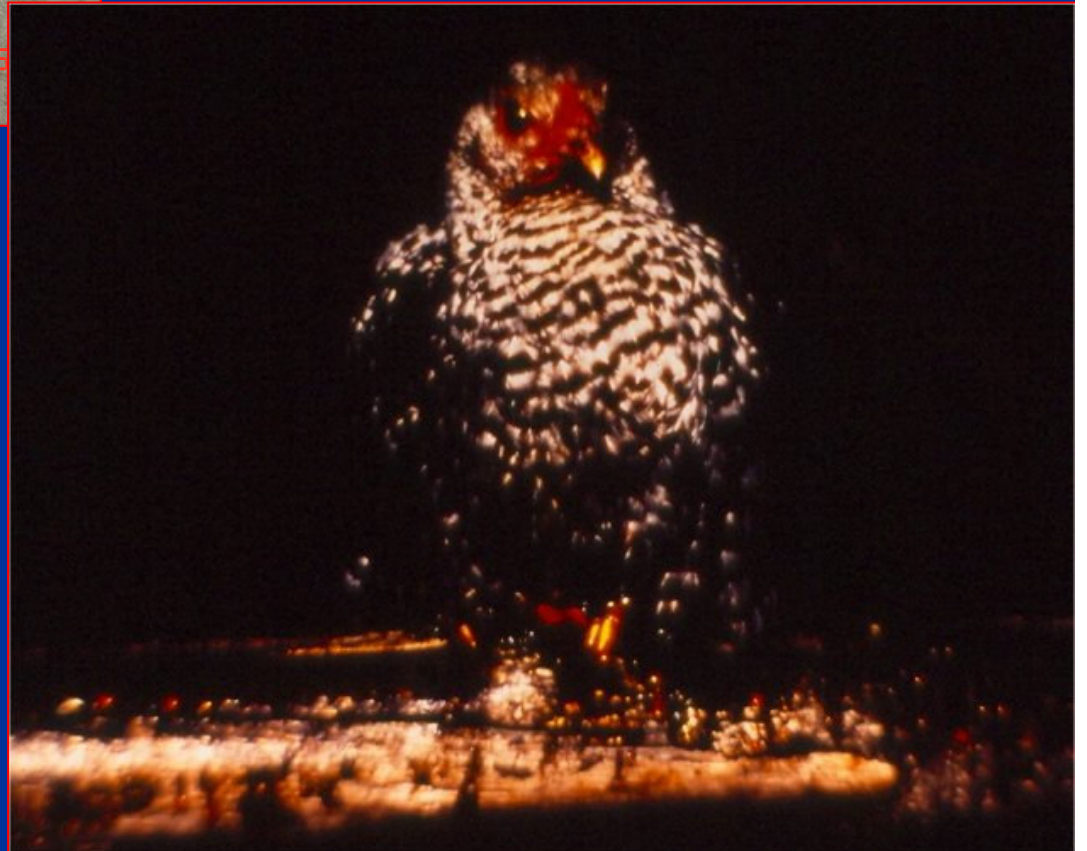








OCT 8 2005





**Organização  
Pan-Americana  
da Saúde**



Escritório Regional da  
Organização Mundial da Saúde



Universidade Federal  
Rural do  
Rio de Janeiro



# Bioecologia de Morcegos

[cbgitti@ufrj.br](mailto:cbgitti@ufrj.br)

[cbgitti@yahoo.com.br](mailto:cbgitti@yahoo.com.br)



**PNCRH**  
PROGRAMA NACIONAL DE CONTROLE DA  
RAIVA DOS HERBÍVOROS